

INVESTIGATION PHASE

INTAKE

INVESTIGATION

PROTECTIVE INTERVENTION

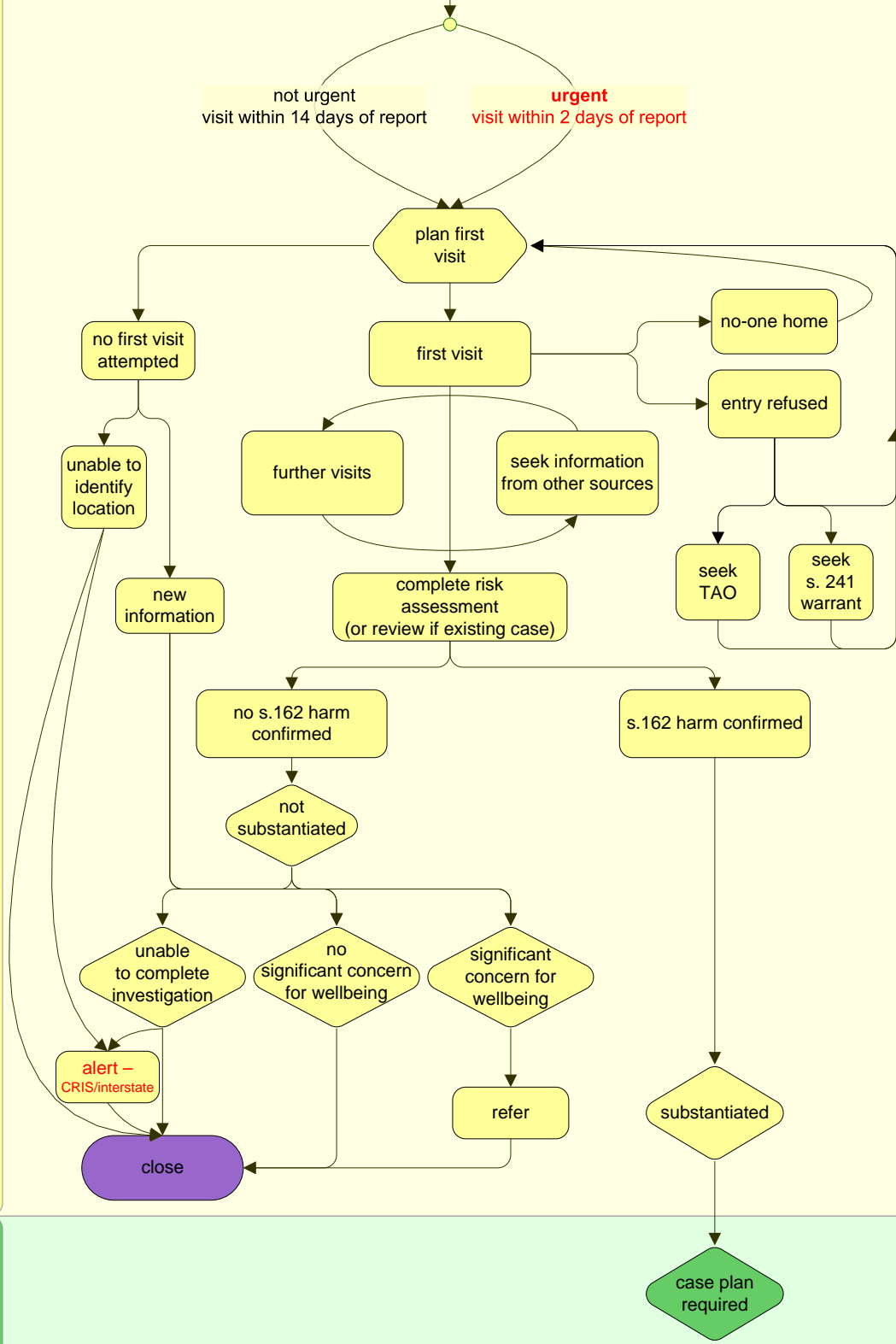
classification

protective intervention report (or new familial)

KEY

- process
- decision
- preparation
- end point
- reminder

not urgent visit within 14 days of report urgent visit within 2 days of report



- case conference? (required in specific circumstances)
- medical examination required?
- involve ACSASS, police, interpreter in visit as required