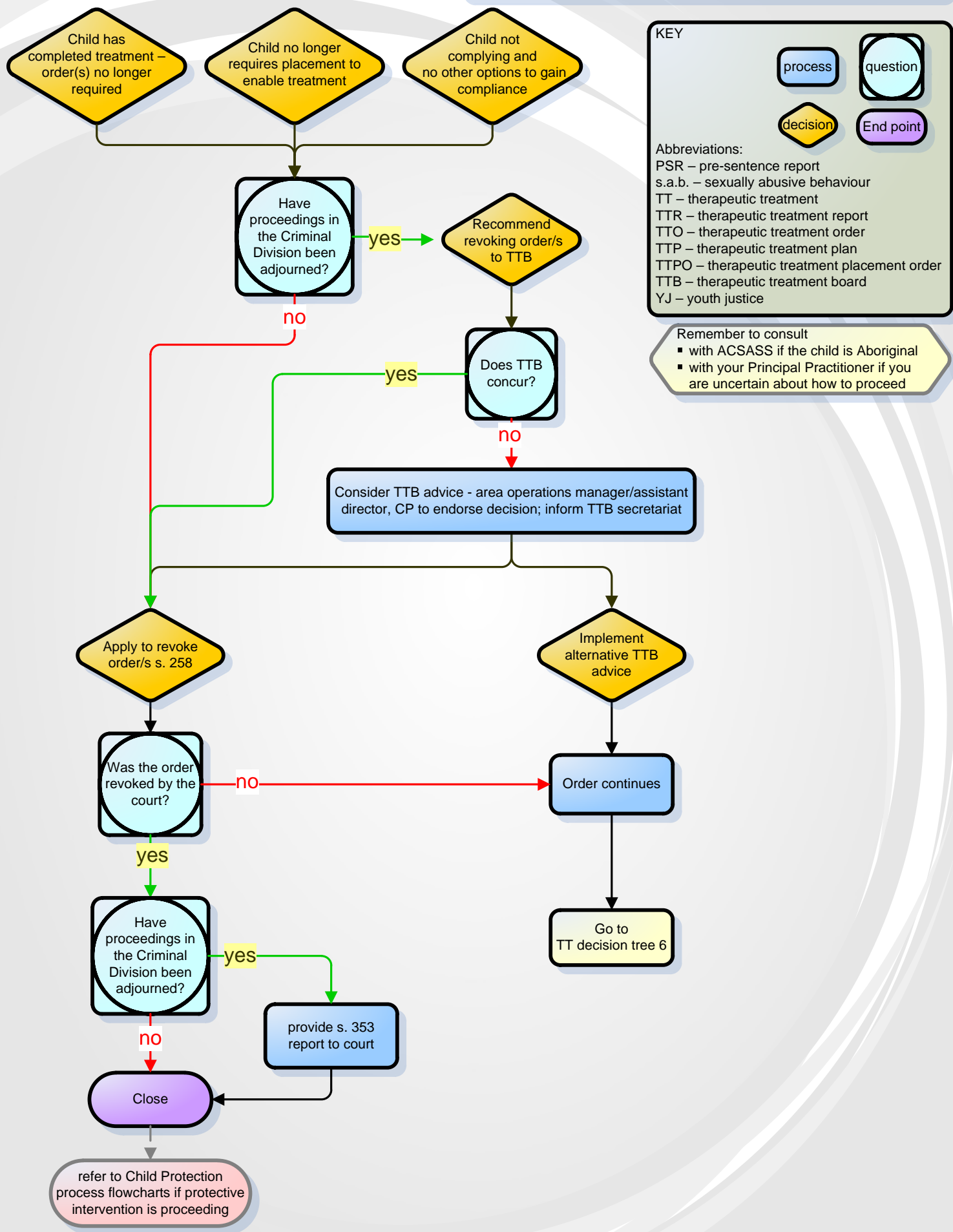


Therapeutic treatment decision tree 7 of 7: Revoking a TTO and/or TTPO



KEY

- process (blue rounded rectangle)
- question (light blue circle)
- decision (yellow diamond)
- End point (purple rounded rectangle)

Abbreviations:
 PSR – pre-sentence report
 s.a.b. – sexually abusive behaviour
 TT – therapeutic treatment
 TTR – therapeutic treatment report
 TTO – therapeutic treatment order
 TTP – therapeutic treatment plan
 TTPO – therapeutic treatment placement order
 TTB – therapeutic treatment board
 YJ – youth justice

Remember to consult

- with ACSASS if the child is Aboriginal
- with your Principal Practitioner if you are uncertain about how to proceed